

Proficy Real-Time Information Portal

Delivering information through a common web client and reporting environment, Proficy Real-Time Information Portal provides comprehensive visibility into your plant floor operations.

KEY TECHNICAL BENEFITS

Connectivity across Proficy software solutions and third-party applications

Interactive analysis of real-time and historical data sources

Easy web-based configuration by users without programming

Personalized and role-based navigation

Suitable across broad applications

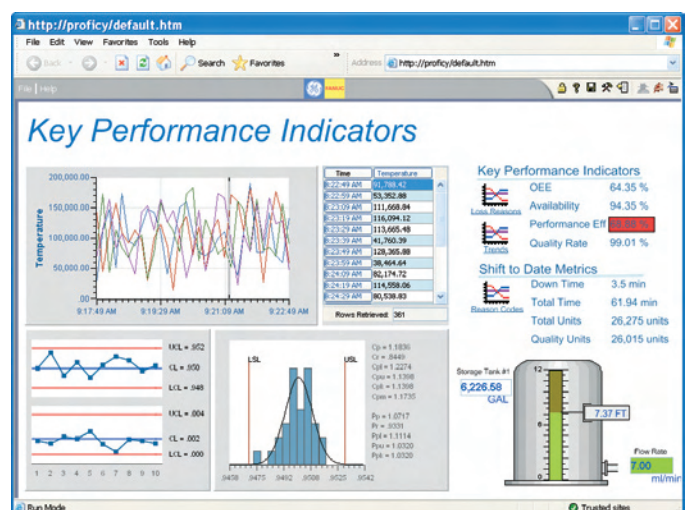
By applying sophisticated trending, graphical presentation and statistical analysis to all of your online data, Proficy Real-Time Information Portal provides unique organization-wide views and insight into how your plant is operating, and how to improve it.

In addition to enhanced real-time decision support, it offers tight integration that maximizes the value of other Proficy applications, as well as connectivity to various plant floor technologies such as OPC, HMI/SCADA, quality and operations management systems and third-party databases. As a result, you have a “window” into your total operations.

FEATURES AND FUNCTIONS

Historian Edition is a powerful and flexible historian client tool that provides visualization and analysis of time-based data from historical

and real-time data sources throughout your plant. So sophisticated and easy to use, Historian Edition includes applications such as process trending, monitoring and diagnostics, event and production trending, and ideal or golden batch analysis.

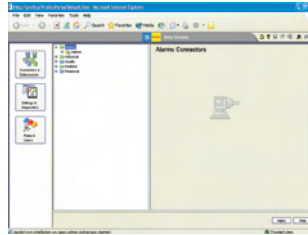


Proficy Portal enables you to monitor key performance indicators (KPIs) from many different plant floor sources and systems for real-time performance management.

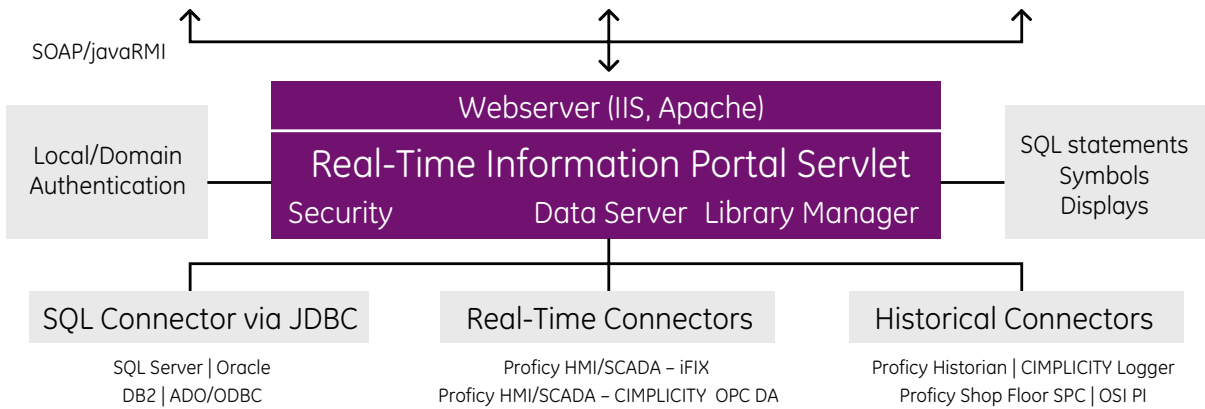
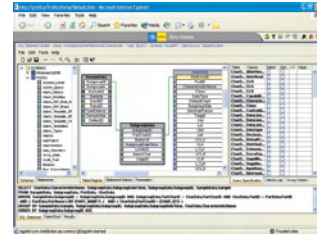
Real-Time Information Portal Client



Administration applet



Statement Builder applet



Proficy Portal's architecture allows for remote installation of connectors to visualize information throughout your operations.

Enterprise Edition

Proficy Real-Time Information Portal Application Framework

provides the common platform for development and deployment. It offers data connectivity and a host of client functionality, available in both the Enterprise and Historian editions of the software.

Data Connectivity to real time, historical and SQL-based data sources allows you to visualize and analyze information from virtually any plant source, including PLC/DCS systems, SCADA/HMI solutions, plant-wide historians, lab systems, MES, ERP or MRP systems.

Linked Content/Hosting enables you to easily pull and organize information into

Portal, display it in a contextual manner and link to content from other systems and sources without leaving the application.

Natural Presentations allow you to drag and drop information directly into Portal displays to present information in the most appropriate way.

Read/Write Support enables you to write back to data sources and is available through several components, including data links, command objects and the grid.

Symbols and Substitutions can be used to populate displays with different datasets at run-time—increasing productivity by providing a way

to re-use displays or to set the context of a display.

Data Export and Reporting

enables you to quickly and easily print displays and charts; reports provide a simple way to document the descriptive statistics and detailed information behind SPC analysis. ●