

# Proficy View – Machine Edition

An intuitive, machine-level HMI for machine control applications, Proficy View - Machine Edition makes it quick and easy to configure applications and helps reduce system integration efforts.

## KEY TECHNICAL BENEFITS

Quick and easy configuration

Object re-use (Toolchest)

Integrated development environment (Control, Motion and HMI)

Connectivity to most PLC devices via OPC communications

Web publishing of application to standard internet browsers

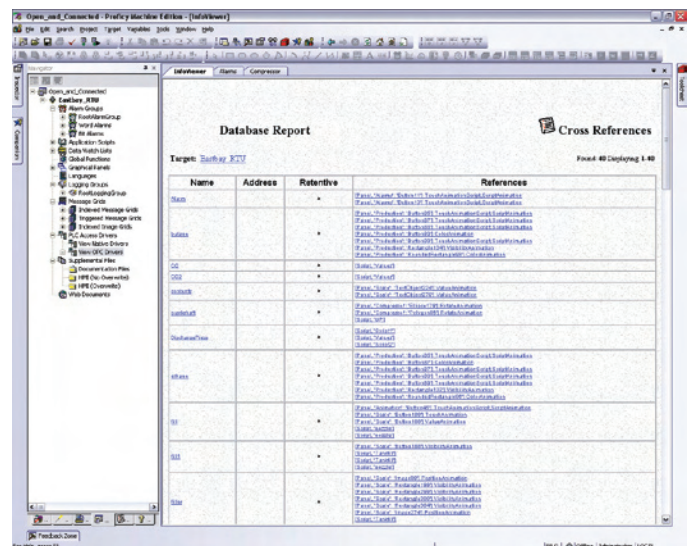
Scalability of applications from Windows® CE-based platforms to Windows NT/2000/XP platforms

Proficy View – Machine Edition offers an all-inclusive graphics configuration tool and a wide range of PLC communication drivers using OPC client/server technology, and provides connectivity support for remote monitoring and diagnostics.

## FEATURES AND FUNCTIONS

**Data Collection.** There are two ways to collect data:

- View Logging allows easy customization of user-defined logging conditions to groups. During runtime, the data is then logged to a file that can be viewed offline.
- Proficy Historian's Collector is integrated with Proficy View, featuring store-and-forward capability and automatic reconnection to the Historian Archiver to ensure that data is never lost during a network outage.



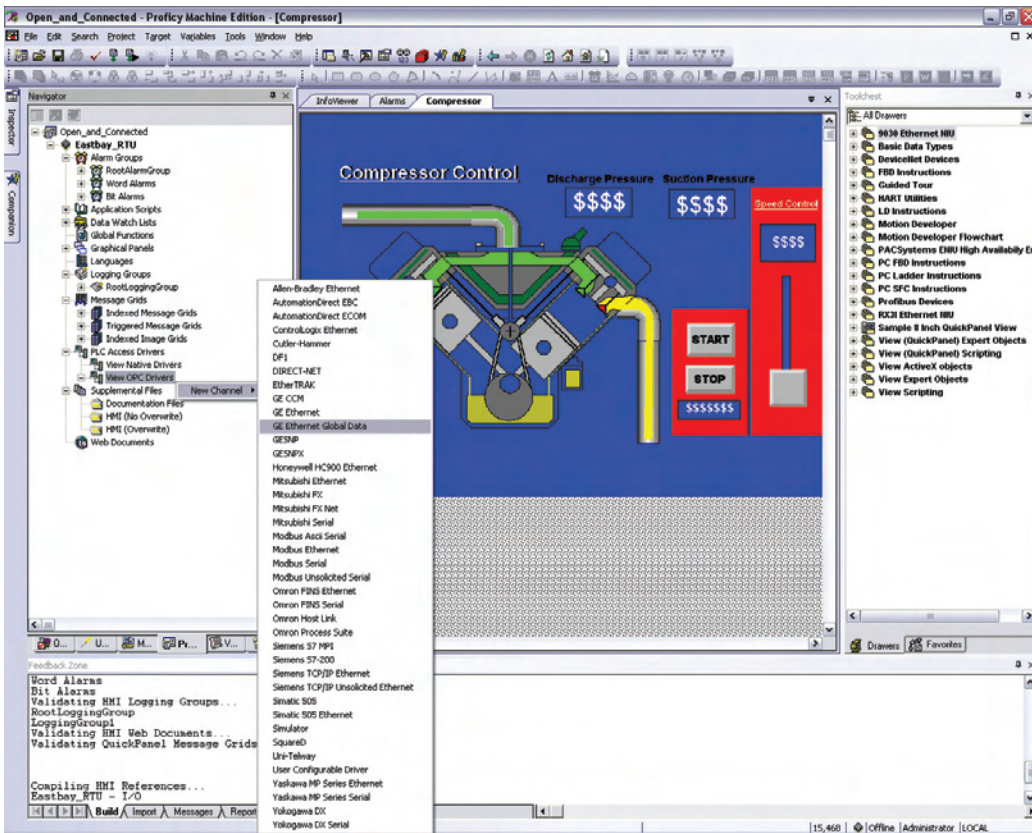
You can generate and access detailed reports documenting a project.

**Visualization/Animation.** With a complete set of machine level objects, including push buttons, pilot lights, data entry, data display, gauges and message display—as well as a full set of drawing tools—it's easy to develop user interface graphics.

**Alarming.** Integrated alarm management allows you to define, group, display, acknowledge, log and print both

discrete and analog alarms. You can even notify an operator with an email if an alarm event occurs.

**Advanced Scripting.** To perform the difficult tasks required by your application, Proficy View provides Microsoft's Visual Basic® (VB) Script language. Scripts can be developed at the application level or per graphic page;



Proficy View – Machine Edition offers an extensive list of communication drivers.

they can also be configured to execute periodically or conditionally. Common examples of VB Scripts are simple-to-complex process algorithms, reading and writing to a file and sending an email with a file attached that contains production data for that day.

**Web Publishing.** With the setting of a single property, Proficy View allows you to publish your application—making it available to a web browser for remote monitoring and diagnostics and remote client-based reporting.

**Toolchest.** Providing the ability to streamline your applica-

tion development through the re-use of objects from one application to another, the Toolchest stores, manages and retrieves application objects; allows objects to be shared across applications and across users/PCs; and automatically updates all occurrences of an object in applications when the master version is changed.

**Multi-language support.** Proficy View delivers multi-language support that allows you to switch languages on the fly during runtime. In the development environment, you can choose to translate text strings using Machine Edition’s user-friendly grid or export the text

strings and work in a spreadsheet or word processing document. The only limitation to the number of languages used by an application is the amount of memory. ●